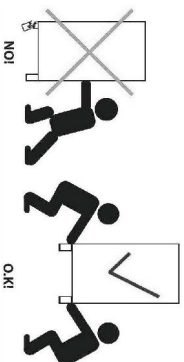
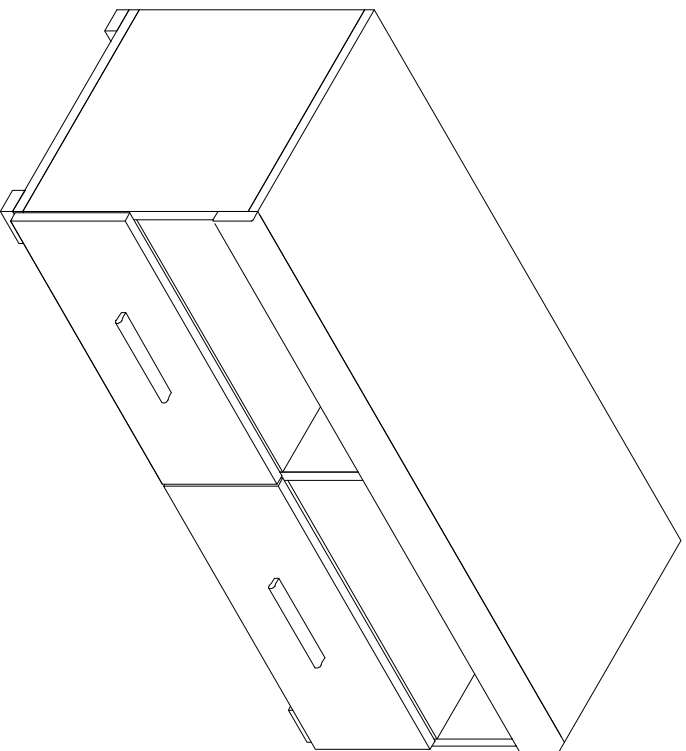


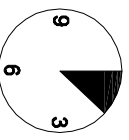
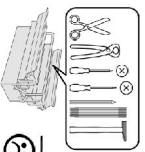
FALCO

FRTV100 + P100



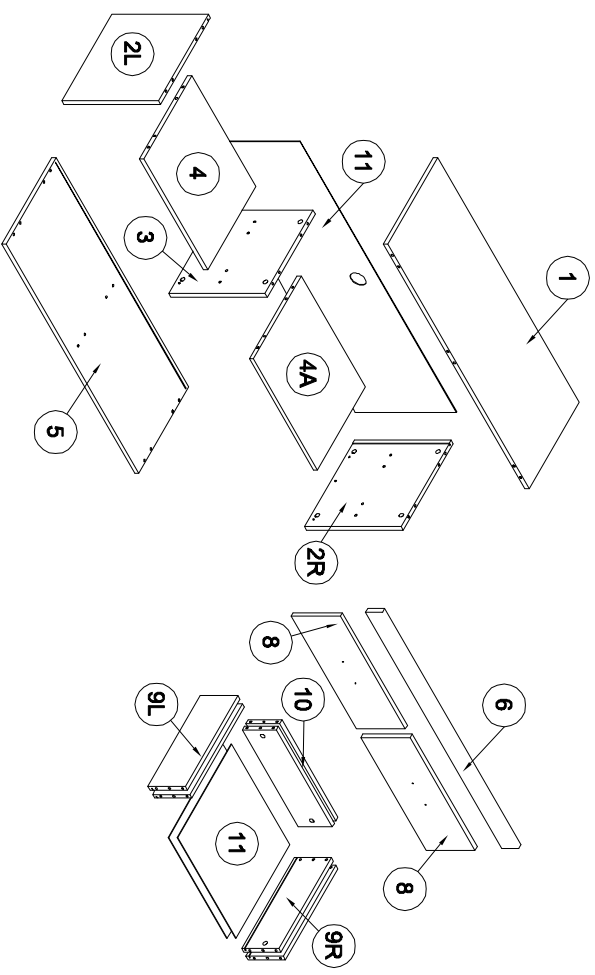
6.6.2017

- D** Montageanleitung
- FR** Notice de montage
- NL** Handleiding voor de montage
- CZ** Montážní návod
- HU** Szerelési útmutató
- TR** Montaj talimatı
- GB** Assembly Instructions
- IT** Istruzioni di montaggio
- PL** Instrukcja montażu
- SK** Návod na montáž
- RO** Instrucțiunile de montaj
- RU** Инструкции по монтажу

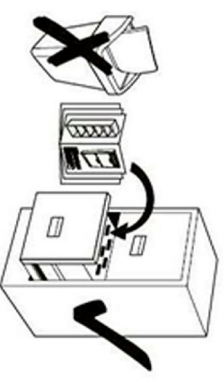
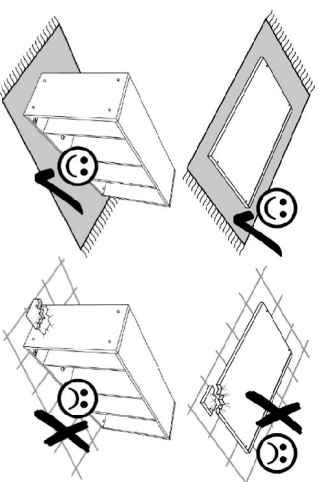


20 min.

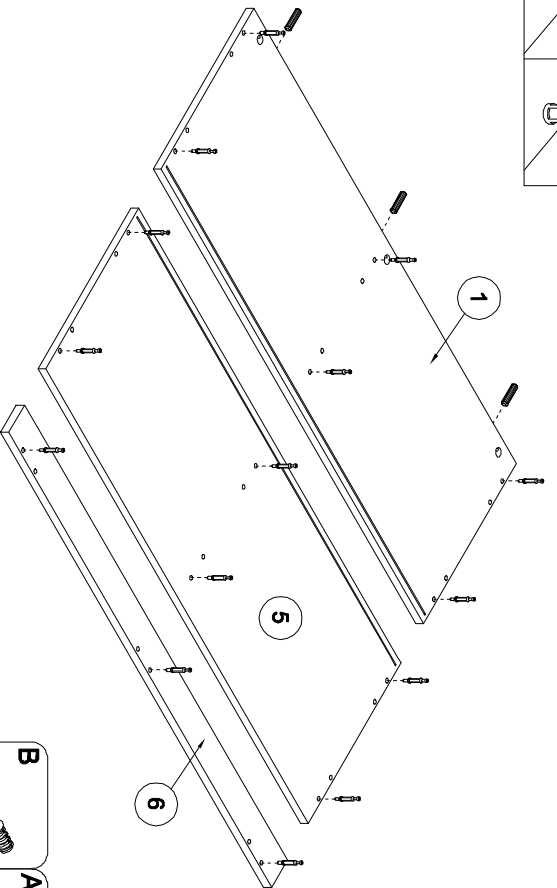
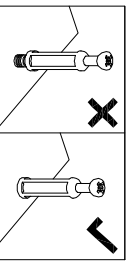
1





YA 4x27	W	N 3x20	RPS 3x0	Y	NB 3.5x13	X	ND 3.5x16
X4	X2	X17	X2	X5	X12	X6	X12
B X31	A 8x32	C X31	Z X25	Y X5			

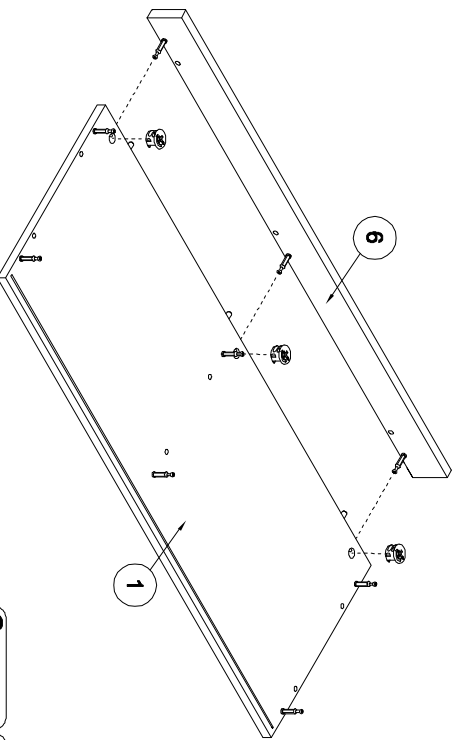
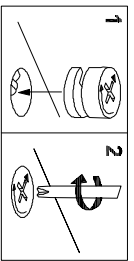


2





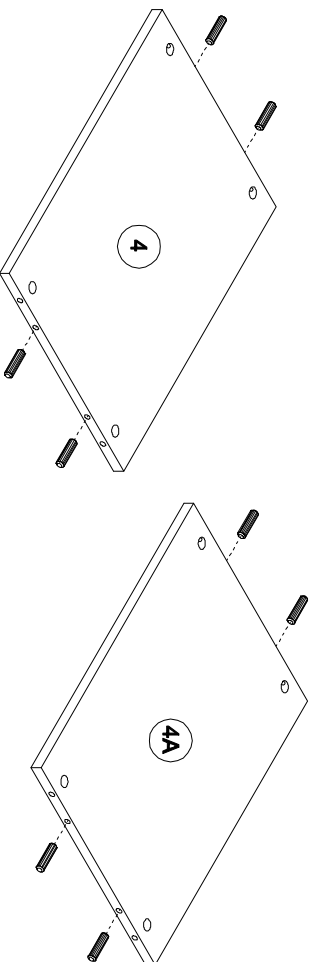
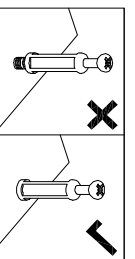
3

- B**  x15
- A**  8x32 x3





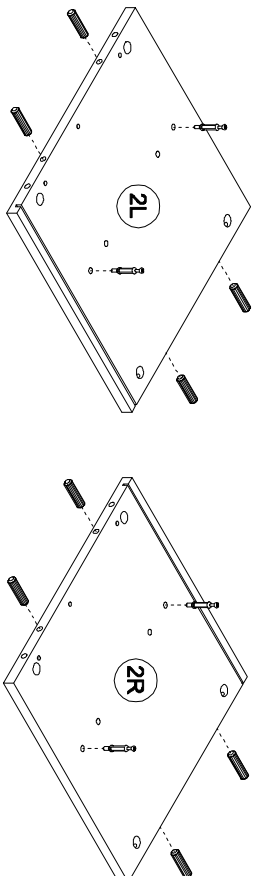
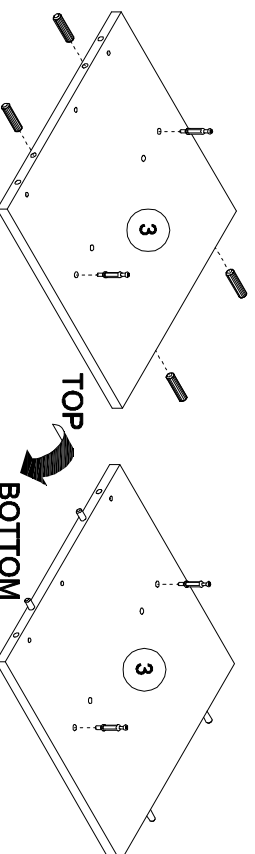
4

- C**  x3
- Z**  x3

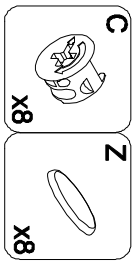
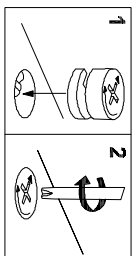
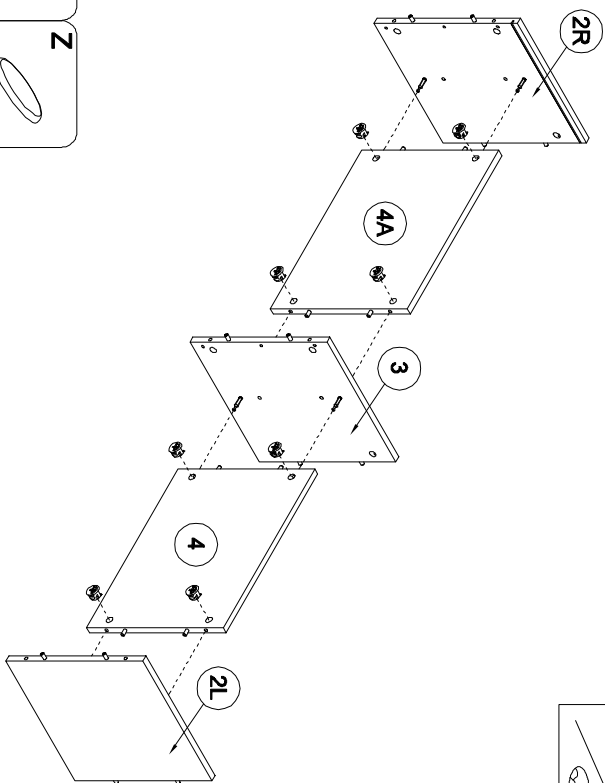


5

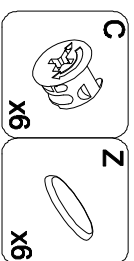
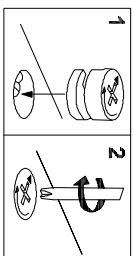
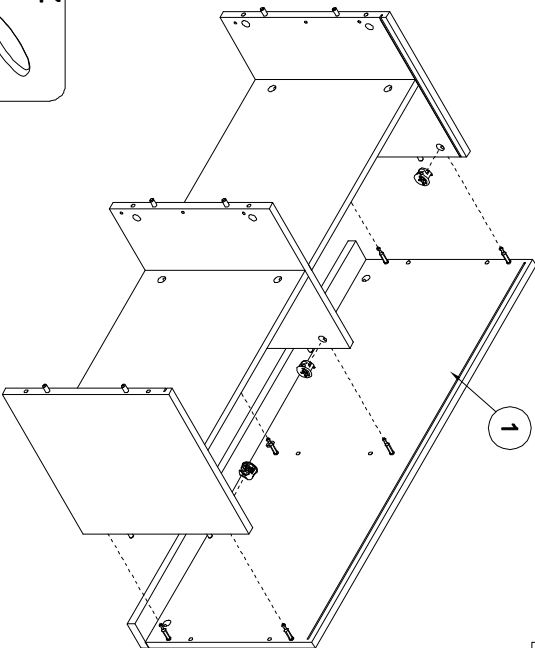
- B**  x8
- A**  8x32 x20



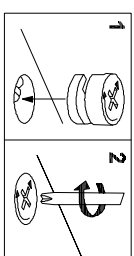
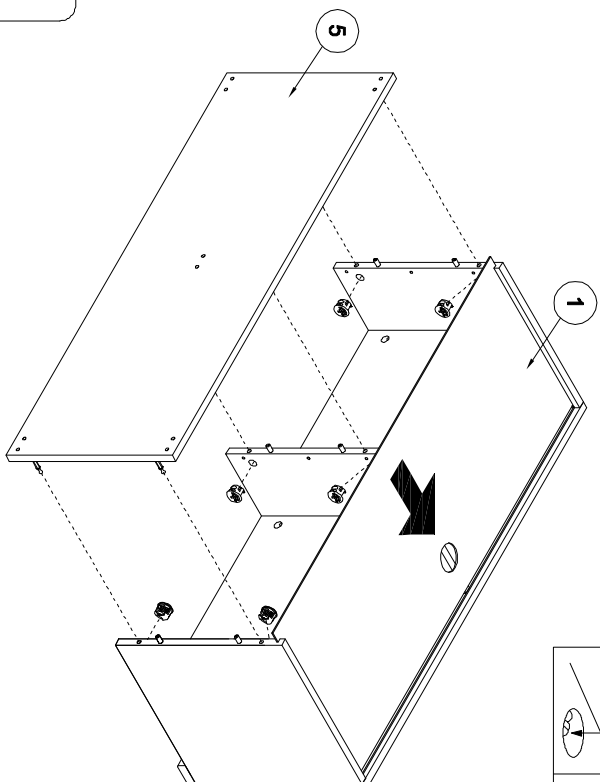
6



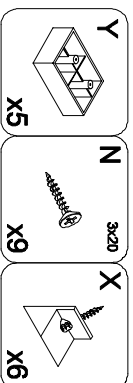
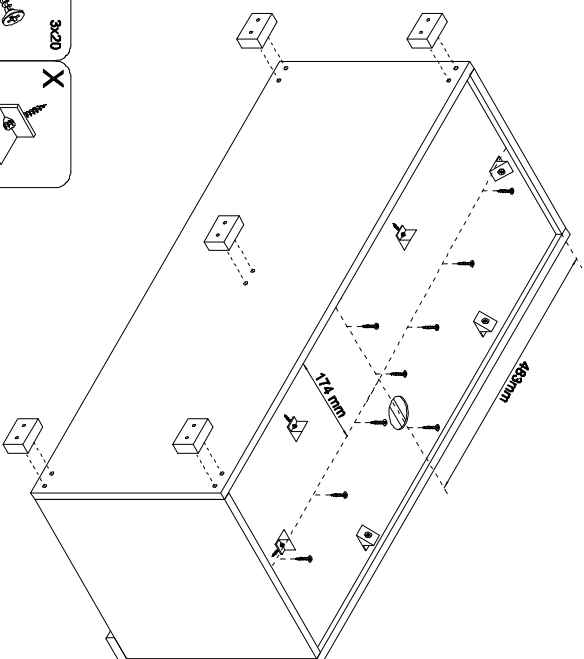
8



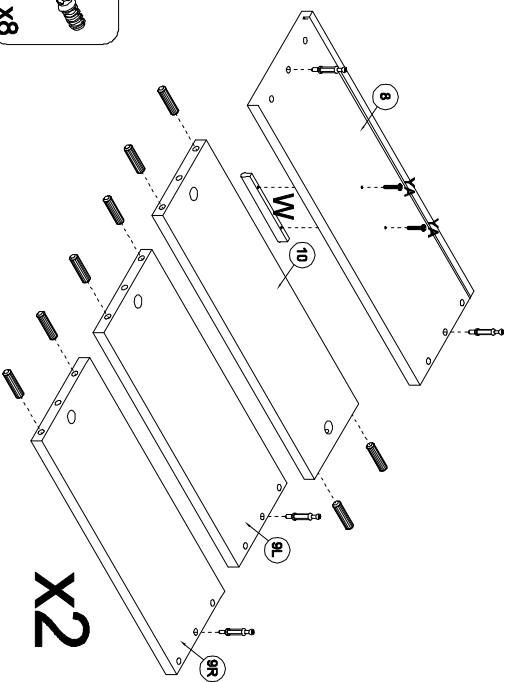
1



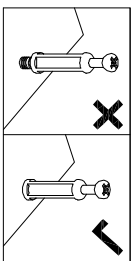
9



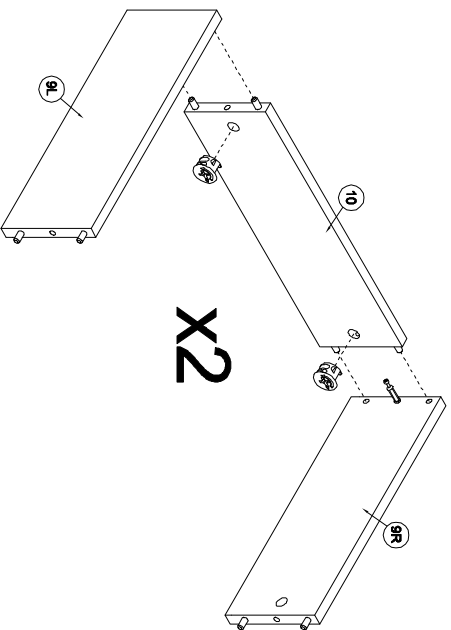
10



- | | | | |
|-----------|-------------|-----------|------|
| A | 8x32 | B | 8x32 |
| YA | X16
4x27 | W | X8 |
| X4 | | X2 | |
| | | | |

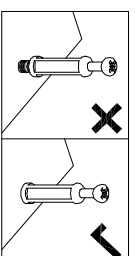
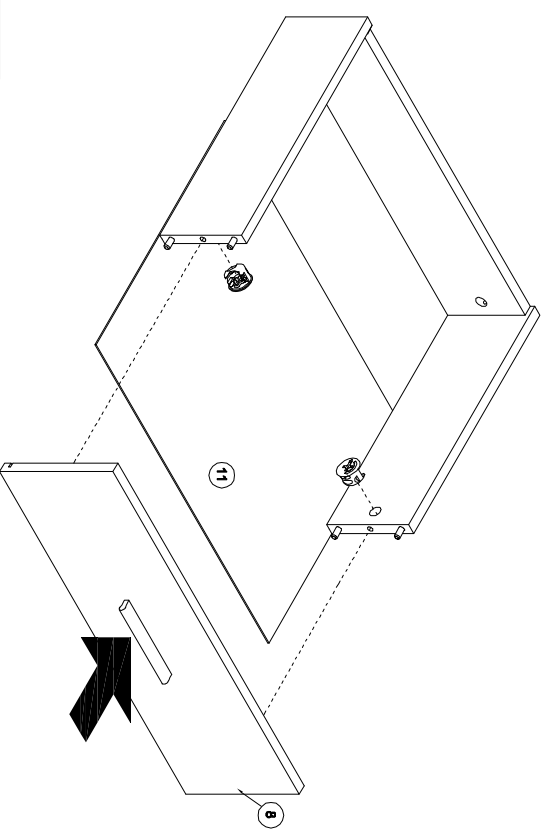


- | | |
|-----------|-----------|
| C | Z |
| | |
| X4 | X4 |



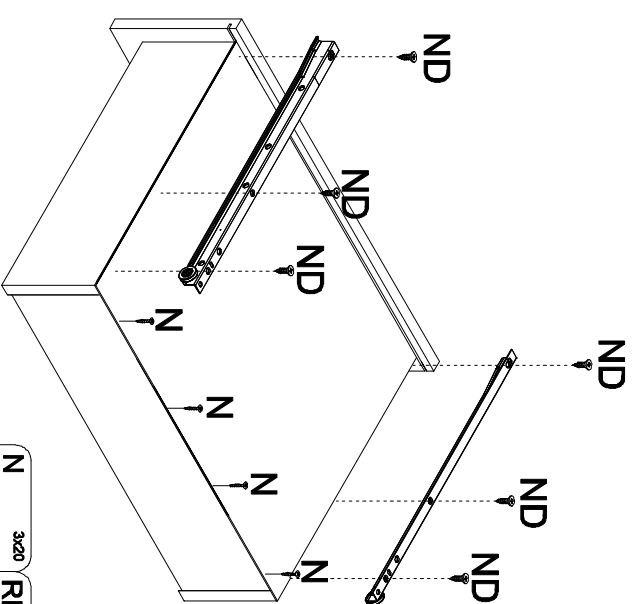
11

12

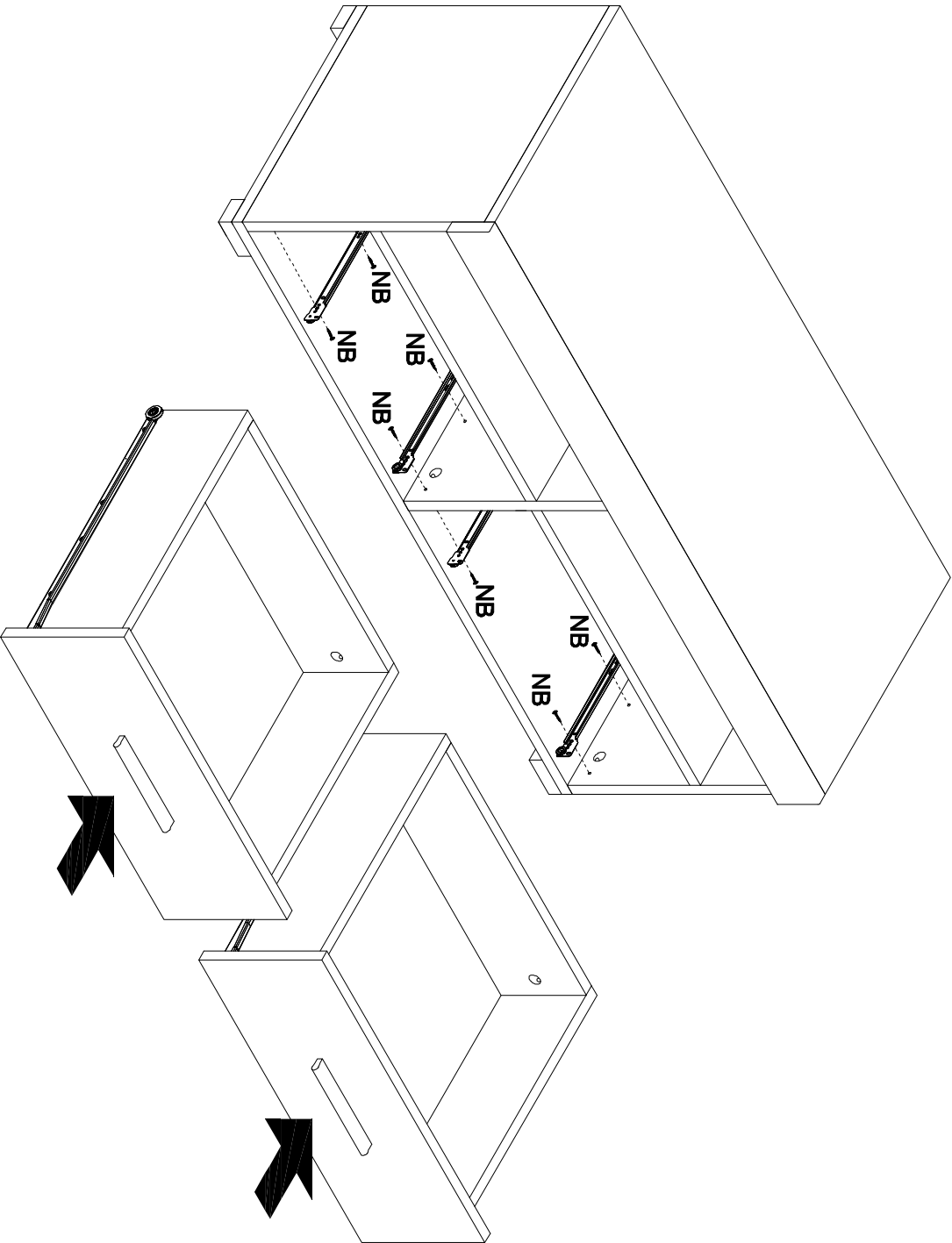
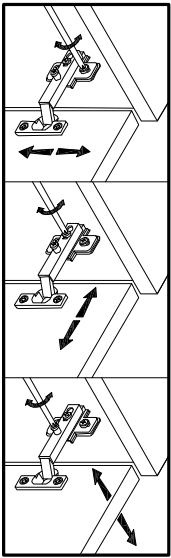


- | | |
|-----------|-----------|
| C | Z |
| | |
| X4 | X4 |

13



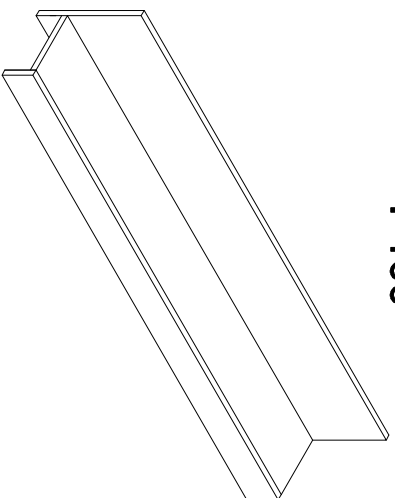
- | | | | | | |
|-----------|------|------------|-----|------------|--------|
| N | 3x20 | RPS | 350 | ND | 3.5x16 |
| X8 | | X2 | | X12 | |



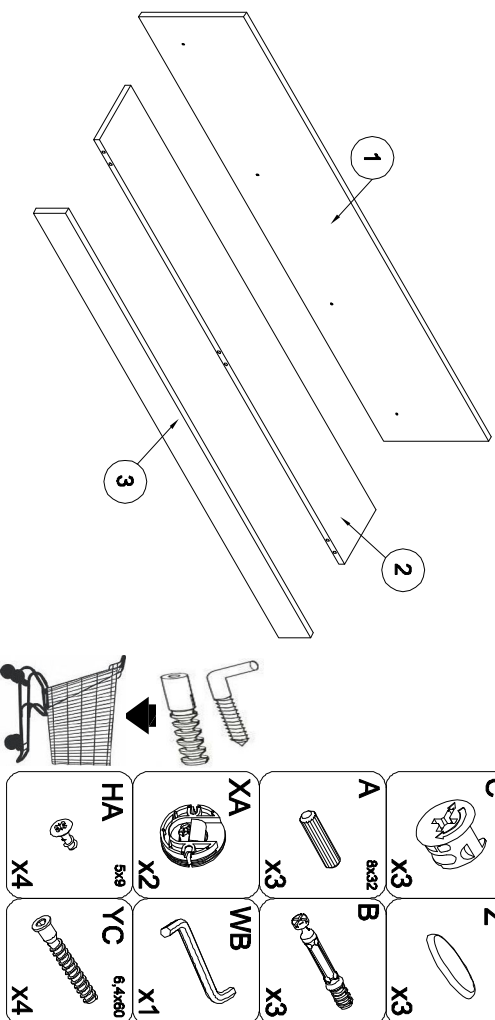
	NB 3.5x13 X12		RPS 360 X2
--	----------------------------	--	-------------------------

FALCO

P100

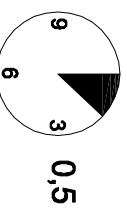
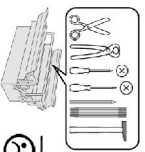


25.5.2017



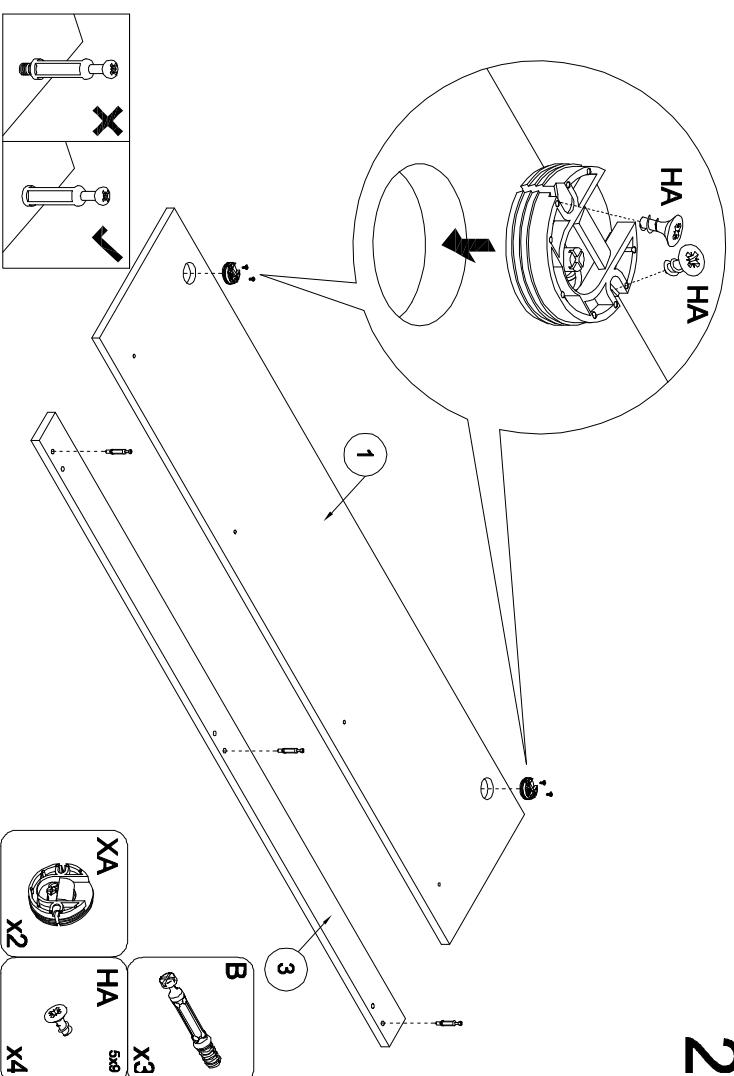
C X3	A 8x32 X3	XA X2	HA 5x8 X4
Z X3	B X3	WB X1	YC 6.4x60 X4

- D** Montageanleitung
- FR** Notice de montage
- NL** Handleiding voor de montage
- CZ** Montážní návod
- HU** Szerelési útmutató
- TR** Montaj talimatı
- GB** Assembly Instructions
- IT** Istruzioni di montaggio
- PL** Instrukcja montażu
- SK** Návod na montáž
- RO** Instrucțiunile de montaj
- RU** Инструкции по монтажу

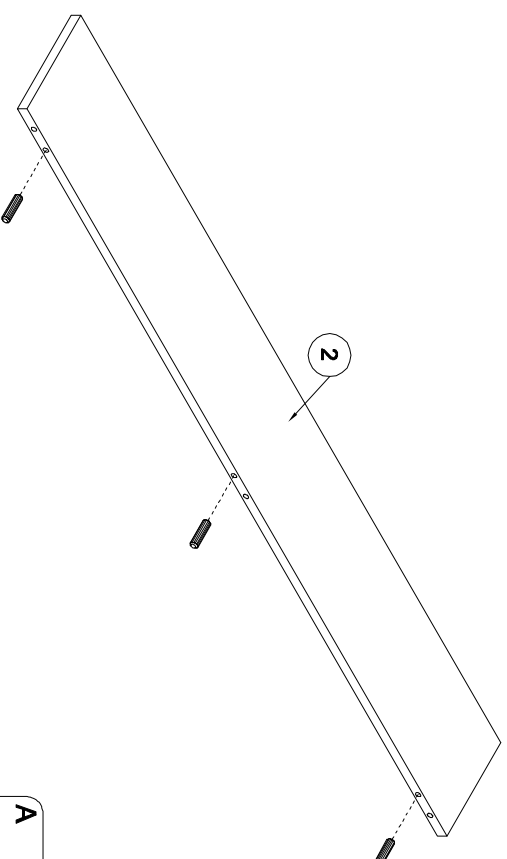


1

2

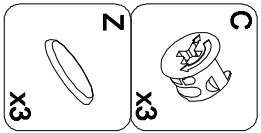
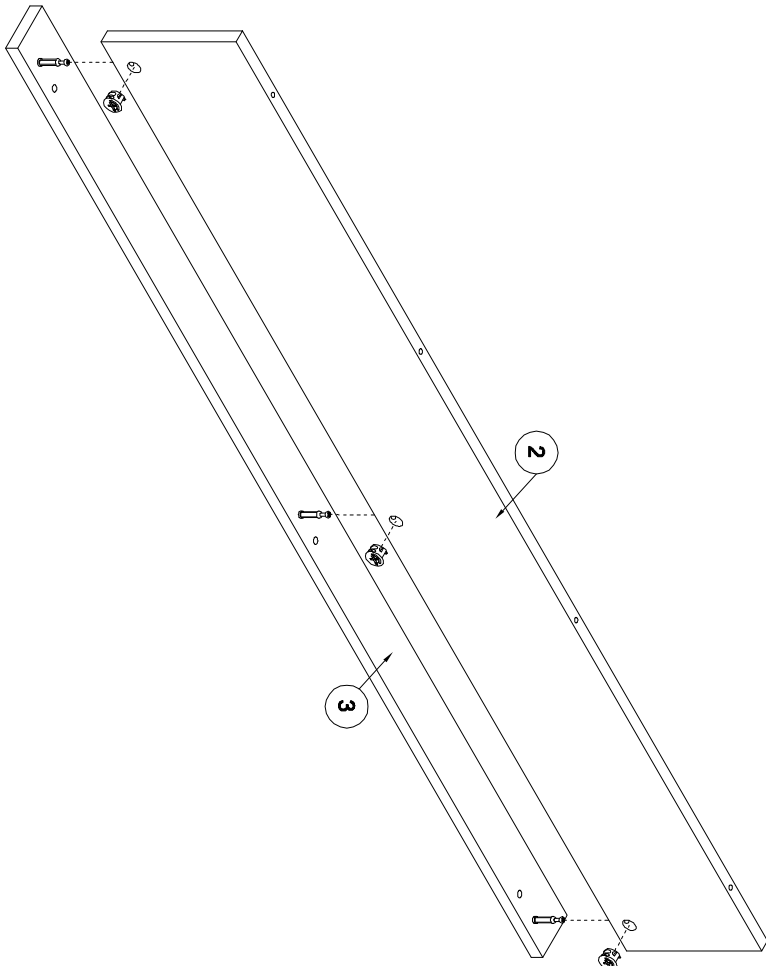
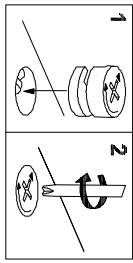


B X3	XA X2
HA 5x8 X4	

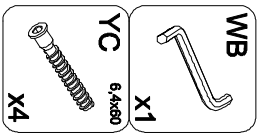
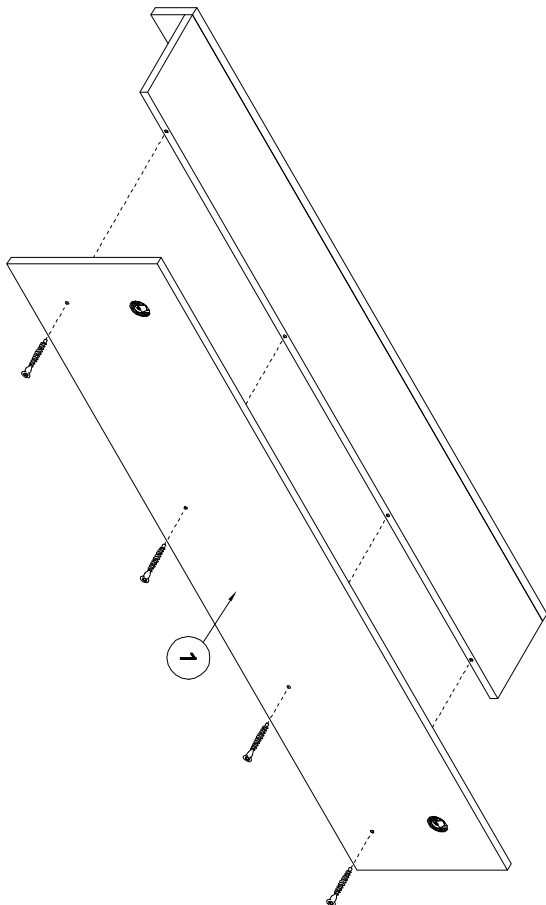


A 8x32 X3

3



4



5